



27 Albert Embankment, London
SE1

GARTON JONES.COM



27 Albert Embankment, London
, SE1

GARTON JONES.COM

9 Albert
Embankment
London
SE1 7SP

Sales +44 (0) 20 7735 1888
nineelms@gartonjones.com
www.gartonjones.com

£1,600,000 Leasehold

A river facing two-bedroom apartment of 815sq.ft (75.7sq.m) in The Dumont, a landmark development by St James, located on the River Thames. This property further benefits from an open plan reception room with fully fitted interior designed kitchen with Miele or Siemens appliances, views of the River Thames, Big Ben, Parliament and the city, 2 luxury bathrooms, a utility cupboard with good storage. Residents also have exclusive access to a 19th floor Skyline Club Lounge within the Corniche, an extensive health and wellness suite offering spa treatments, a gymnasium with private training facilities and an indoor infinity pool plus a screening room, games room and ten-pin bowling.

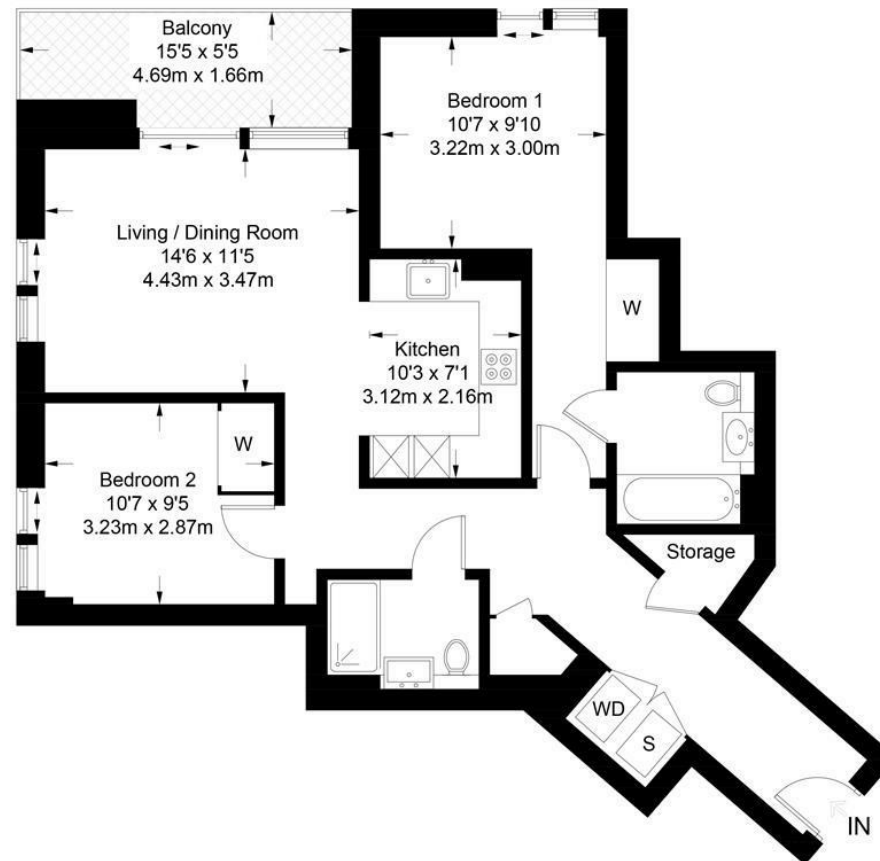
- 815sq.ft (75.7sq.m)
- Direct River Views
- 2 Double Bedrooms
- 2 Luxury Bathrooms (One en-suite)
- Open Plan Reception Room
- Smart Integrated Kitchen
- Utility Cupboard with Storage
- 24 Hour Concierge
- Residents Skyline Club Lounge, Infinity Pool, Gym, Spa and Screening Room
- Close to The Excellent Transport Links of Vauxhall, Westminster and Waterloo



EPC certificate available on request.

The Dumont

Approximate Gross Internal Area = 815 sq ft / 75.7 sq m



Not to scale, for guidance only and must not be relied upon as a statement of fact.
All measurements and areas are approximate only and have been prepared in accordance with the current edition of the RICS Code of Measuring Practice.

